



COMPANY PROFILE 2023



PT. DHARMA PRADANA INDONESIA
Protective Coating Specialist Company



Content

About Us	3
Our Services	6
Our Capabilities	11
Standard Certification	14
Our Experience List	15
Project Highlight	16
Contact Us	31



Our Story

The establishment of PT. Dharma Pradana Indonesia cannot be separated from efforts to continue the success story of PT. Dharma Pratama Sejati (DPS) as the best blasting & painting company in Indonesia from 1983 to 2012.

For this reason, in September 2014, with the approval of the company owner, the Painting Division of PT. DPS completed with all existing resources, we established a new company that is independent from the entity PT. DPS with the aim to focus more on developing and becoming a major player in the business in the protective coatings sector

PT. Dharma Pradana Indonesia (DPI) is an Indonesia company which is established to provide Protective Coating services, both for New Construction of a Facility or for Facilities that are already in operation (Coating Maintenance).

In these services, our scope may include the provision of materials, work applications completed with competenced and skilled manpower, equipment and appropriate project management.

The types of facilities we have served today include power plants (PLTU), mineral processing plants (smelting), chemical and petrochemical plants, cement factories, oil and gas production and storage facilities and general infrastructure as well.



ABOUT US



“We are DPI. Your best partner to protect your assets with profesional coating application”

Our Vision

To be the Specialist Company in Protective Coating Industry.

Our Mision

BE professional, loyal and competence

TO achieve customer satisfaction, employee and share holder prosperity

BY improvement of performance, quality and equipment, also development of team work and employee.



Quality Policy

We are committed to meet Customer / Client satisfaction by serving in accordance with specified quality, reasonable price and appropriate duration. To achieve this we are committed to :

1. Develop, establish and communicate Quality Objectives and periodically monitor the performance.
2. Meet the requirements set by customers and applicable standards and comply with the rules or regulations of stakeholders related to company operations.
3. Provide a safe and healthy work environment.
4. Continuesly plan, implement, monitor and develop quality management performance.

HSE Policy

We are committed to promote proactive HSE leadership on our works and activities. HSE leadership is shown through our management commitment to positive working culture which reflects HSE as one of our main values, as same as responsibility of each our personnels to work on safe condition.

Therefore, our management are committed to :

1. Comply with all HSE requirements stated in international standards and the applicable laws and regulations in the locations where we perform the work.
2. Recognize its legal and moral obligations to provide safe and healthy work place conditions for our employees and also observe environment presevervation.
3. Give some priority to HSE matter like quality, production and cost.
4. Provide adequate resources to achieve and maintain the high practicable HSE performance.
5. Protect environment in where we perform our work by using resources responsibly and by reducing and eliminating waste from the source of our work.



Shop Painting

This service covers Blasting and Painting work which will be performed in non-enclosed area (blasting-painting workshop). It is usually applied on to steel pipe or structure which will be installed at field facilities.



Field Painting

This service covers Surface Preparation and Painting work which will be performed inside production plant or facility and usually be applied on to wide surface area (re-coating work). Surface Preparation can be selected as surrounding environment condition by using blasting or power tool cleaning method. Coating application can be applied by spray painting or roll painting method. The selection subject to surrounding environment condition and surface area.



Touch-up Painting

This service covers repair or recoating work on to small surface area (spot) of steel pipe, steel structure, equipment and other instrument inside Production Plant or Facilities. Surface preparation is usually done by Hand Tool Cleaning (wire brush) or Power Tool Cleaning (grinding machine). Coating application will be done as per specification by roll and/or paint brush.



Internal Tank Coating

This service covers Surface Preparation & Painting which will be perform inside confined space i.e storage tank, boiler, large sea water intake pipe, chimney, duct, etc. Surface preparation is selected based on corrosivity of steel surfaces. The method can be applied is either blasting or power tool cleaning. Coating application can be done by spraying or roll painting method. The method is chosen depend on practically level and productivity target



FRP Lining



This service covers lining activity on to concrete or steel surfaces by applying Fiberglass Reinforced Plastic (FRP) coating materials in order to increase the protection and resistance of the intended surface from corrosion and leakage.

It is usually applied on to surface of storage tank (chemical, oil or water content) and concrete pond as well. Its application may use special paint roll for lining.

Floor Coating



This service covers coating application on to floor surface using epoxy type coating material in order to protect the floor to be strong, durable and to minimize risk of damage from contact friction, to increase the resistance, to make easier cleaning and to make more esthetic.

It is usually applied on to floor surface of workshop, warehouse, parking area, etc. Its application may use special paint roll for floor coating.



Wrapping

This service covers wrapping work on to external surface of pipe by applying sealing butyl tape in order to give protection from corrosion. It is usually applied for underground pipe. Surface preparation can be done by blasting or power tool cleaning method and then followed by sealer coat application before applying two layers of wrapping tape in the end.



Decorative Coating

This service covers coating work on to surface of external or internal wall of building such as office building, housing and so on and applied for decorative purpose, so then the wall looks clean, flat and esthetic. Paint material to be used can be oil or water base type. Application can be done by roller-paint or conventional spraying method.



Thermal Spray Aluminium

This service is commonly called Metallizing. This is a process whereby a powdered or wire form of metal is melted by an energy source and propelled or sprayed onto the surface of another metal or structure for the purpose of corrosion control, wear resistance, traction, or to restore dimensions. Before thermal spraying process, the surface preparation is critical; the substrate materials are grit blasted with the sharp angular grit of iron or alumina or sand to give a sharp profile for the TSA to bond onto the substrate material. Sealers can be applied as a form of protective coating. Sealers made up of Epoxy base and Aliphatic Polyurethane are applied over the TSA coated surface.



Scaffolding Work

This service covers supporting work to provide access for any activities which will be done at height. Access to be installed is tubular pipe scaffolding or frame scaffolding depend on client's requirements. The scope may includes scaffolding materials supply, its installation and dismanthling.



Project Management System

We have established effective and intergrated Project Management System and already implemented in our projects. This system is prepared, implemented and reviewed in accordance with relevan international standard as below :

- ❑ ISO 9001:2015 for Quality Management System
- ❑ ISO 45001:2018 for Occupational Health and Safety Management System
- ❑ ISO 14001:2015 for Environmental Management System
- ❑ PMBOK (Project Management Body of Knowledge)
- ❑ AMPP (Association for Materials Protection and Performance) as a merging of NACE and SSPC standard.

Since August 2018, our Quality Management System has been certified by Lloyd Register for ISO 9001:2015 – Provision for Painting Services.

With the above intergrated systems, our project management team can properly perform the project from preparation, execution until completion.



Personnels

We have professional project team for any discipline / function / departments to implement the Project Management System. Our personnels to be assigned in project are experienced and competenced. To comply with bisnis requirements and regulation, we ensure that relevan certification of competency is hold by our personnels for any levels.

Below are personnel certification availble in our company :

- ☐ Painting Inspector (AMPP / SSPC / NACE)
- ☐ Painting Inspector (BNSP / ASCOATINDO)
- ☐ Blasting Painting Operator (BNSP / ASCOATINDO)
- ☐ HSE Specialist (AK3 Umum by Ministry of Manpower)
- ☐ HSE Operator (by PPSDM Migas)
- ☐ Confined Space Entry (by Ministry of Manpower)
- ☐ Working at Height – TKBT (by Ministry of Manpower)
- ☐ Scaffolding Supervisor (by Ministry of Manpower)
- ☐ Scaffoldler (by Ministry of Manpower)

Having such certifications are not only to fulfull its compliance with requirements but beyond that it will convince our company, client and themselves to perform the project activities at high quality, in safe pratice and condition, on time schedule and no significant impact to environmental and social.

In recruiting new employees for a project, we ensure that the selected candidates have the appropriate competencies and sufficient experience. In a condition where there is a gap, the company will improve the existing competencies by conducting training and certification of skills.



Equipments

Equipments are essential to the success of our work. The adequacy, reliability and feasibility of equipment is the standard for equipment to be placed and used in a project.

For this reason, we always ensure that the equipment available at our place is properly maintained according to the manufacturer's provisions and procedures. Routine checks and inspections are also carried out to ensure it is safe for workers to use.

Certification is also carried out for equipment required by the Ministry of Manpower, such as equipment in the category of pressure vessels, compressors and generators.

In the event that additional equipment is required on a rental basis, we also ensure that the equipment we rent is in proper condition and has valid certification.

To ensure good quality inspection performance, we have various types of inspection equipment for checking environmental conditions, blasting and painting results as well as testing the performance of work results. All inspection equipment is always in proper condition, well maintained and has a valid calibration certificate.



Current issue date:	21 August 2021	Original approval(s):
Expiry date:	20 August 2024	ISO 9001 - 21 August 2018
Certificate identity number:	10383140	

Certificate of Approval

This is to certify that the Management System of:

PT Dharma Pradana Indonesia

Jl. Mampang Prapatan Raya, No. 27-J, RT 002, RW 01, Kel. Duren Tiga, Kec. Pancoran, Jakarta, 12760, Indonesia

has been approved by Lloyd's Register to the following standards:

ISO 9001:2015

Approval number(s): ISO 9001 – 00015786

The scope of this approval is applicable to:

Provision of Painting Services.

Luis Cunha

Area Operations Manager - SAMEA

Issued by: PT. Lloyd's Register Indonesia

for and on behalf of: Lloyd's Register Quality Assurance Limited



Lloyd's Register Group Limited, its affiliates and subsidiaries, including Lloyd's Register Quality Assurance Limited (LRQA), and their respective officers, employees or agents are, individually and collectively, referred to in this clause as 'Lloyd's Register'. Lloyd's Register assumes no responsibility and shall not be liable to any person for any loss, damage or expense caused by reliance on the information or advice in this document or howsoever provided, unless that person has signed a contract with the relevant Lloyd's Register entity for the provision of this information or advice and in that case any responsibility or liability is exclusively on the terms and conditions set out in that contract. Issued by: PT. Lloyd's Register Indonesia, LRQA Indonesia, Dea Tower 1 12th Floor, Kawasan Mega Kuningan, Jl. Mega Kuningan Barat IX Kav. E4.3 No.1, Jakarta 12950, Indonesia for and on behalf of: Lloyd's Register Quality Assurance Limited, 1 Trinity Park, Bickenhill Lane, Birmingham B37 7ES, United Kingdom

Page 1 of 1



No.	Project	Client	Owner	Location	Work Volume	Schedule
1	Blasting & Painting on Piping & Steel Structure for CNG MS Gresik & DS Bawean Project	PT. Dharma Pratama Sejati	PT. Dharma Pratama Sejati	Gresik & Bawean. East Java	1,500 m2	Oct 2014 to Dec 2014
2	Blasting & Painting on Dehydration Vessel & Exhaust Duct (Train-2) for Tangguh LNG Plant	PT. DPS for PT. JGC Indonesia	BP Berau Ltd.	Bintuni, West Papua	1,200 m2	May 2015 to Jun 2015
3	Blasting on Welding Joint of Pipeline for PGN Pipeline Waru-Manyar	PT. Panca Indah Jayamahe	PT. PGN	Sidoarjo & Gresik, East Java	3,000 Joint	May 2015 to Apr 2016
4	Blasting & Painting on Dehydration Vessel & Exhaust Duct (Train-1) for Tangguh LNG Plant	PT. DPS for PT. JGC Indonesia	BP Berau Ltd.	Bintuni, West Papua	1,800 m2	Apr 2016 to May 2016
5	Blasting & Painting on Piping for Cilacap Blue Sky Project	PT. Eptco Dian Persada	PT. Pertamina	Cilacap, Central Java	60,900 m2	Mar 2017 to Jul 2018
6	External & Internal Coating on Cooling Water Tank for Cilacap Blue Sky Project	PT. Eptco Dian Persada	PT. Pertamina	Cilacap, Central Java	2,000 m2	Apr 2018 to May 2018
7	Blasting & Painting on Piping, Equipment, Structure, Bulding , etc. for PLTU Paiton 5 & 6	PT. DPS for PT. YTL Jawa Timur	PT. Jawa Power	Paiton, East Java	44,000 m2	Apr 2018 to Mar 2020
8	Floor Coating on Mechanic & Electric Workshop for PGN Saka Pangkah Plant	PT. Nangkano	PT. PGN Saka	Gresik, East Java	400 m2	Feb 2019 to May 2019
9	Painting on Pipe Tower, Pipe Rack, Pipe Support and SBV for Benoa LNG Terminal	PT. Pelindo Energi Logistik	PT. Pelindo Energi Logistik	Benoa, Bali	1,300 m2	Apr 2019 to Jul 2019
10	Internal Coating on Motor Gasoline Tanks (2 units) for Shell Gresik Terminal	PT. Seiso Indonesia	PT. Shell Gresik Terminal	Gresik, East Java	1,900 m2	Apr 2019 to Jul 2019



No.	Project	Client	Owner	Location	Work Volume	Schedule
11	Internal Coating on Fire Water Tanks (2 units) for Shell Gresik Terminal	PT. Seiso Indonesia	PT. Shell Gresik Terminal	Gresik, East Java	900 m2	Jun 2019 to Nov 2019
12	Internal Blasting on Ducting Tank for Petrokimia Gresik Plant	PT. Indoxide	PT. Petrokimia Gresik	Gresik, East Java	450 m2	Oct 2019
13	Blasting and Wrapping on Pipe Weld Joint for PGN Pipeline Waru-Manyar	PT. Panca Indah Jayamahe	PT. PGN	Gresik, East Java	3,200 Joint	Jul 2019 to Mar 2020
14	Painting on Stack-CaOH Tank & Truck Scale for Gresik Copper Smelter	PT. Ote Engineering	PT. Smelting Co.	Gresik, East Java	1,400 m2	Sep 2019 to Dec 2019
15	Painting on Steel Structure & Acc. for Gresik Copper Smelter	PT. Hikari Teknologi Indonesia	PT. Smelting Co.	Gresik, East Java	1,400 m2	Nov 2019 to Mar 2020
16	Blasting & Painting on Surge Tank for Gresik Copper Smelter	PT. Hikari Teknologi Indonesia	PT. Smelting Co.	Gresik, East Java	400 m2	Dec 2019
17	Internal Coating on Condensate Tank No. 076-TK-1001 for Tangguh LNG	KSO Elnusa – Raga	BP Berau Ltd.	Bintuni, West Papua	1,500 m2	Dec 2019 to Mar 2020
18	Blasting & Painting on New Suport OHC 30 T (Anode Furnace Area) for Gresik Copper Smelter	PT. Hikari Teknologi Indonesia	PT. Smelting Co.	Gresik, East Java	400 m2	Jan 2020
19	Blasting & Painting on Blanket Contract. for PLTU Paiton 5 & 6	PT. DPS for PT. YTL Jawa Timur	PT. Paiton Energy	Paiton, East Java	42,000 m2	Apr 2020 to Mar 2022
20	Blasting on Storage Tank for Petrokimia Gresik Plant	PT. inodxide	PT. Petrokimia Gresik	Gresik, East Java	400 m2	Jul 2020



No.	Project	Client	Owner	Location	Work Volume	Schedule
21	Painting on Air Intake Compressor for Gresik Copper Smelter	PT. Ote Engineering	PT. Smelting Co.	Gresik, East Java	1 Lot	Nov 2020 to Dec 2020
22	Painting on Box Welding Panel Acid Plant for Gresik Copper Smelter	PT. Ote Engineering	PT. Smelting Co.	Gresik, East Java	1 Lot	Oct 2020 to Dec 2020
23	Painting on Jacket Cooling Pipe for Gresik Copper Smelter	PT. Ote Engineering	PT. Smelting Co.	Gresik, East Java	1 Lot	Dec 2020
24	Painting on Plant Annual Shutdown for Gresik Copper Smelter	PT. Smelting Co.	PT. Smelting Co.	Gresik, East Java	1 Lot	Dec 2020
25	Painting on Platform & Handrail of Acid Plant for Gresik Copper Smelter	PT. Ote Engineering	PT. Smelting Co.	Gresik, East Java	1 Lot	Jan 2021 to Feb 2021
26	Blasting & Painting on Pipeline for PGN Pipeline Tb. Lorok - Tb. Rejo	PT. Enusa Fabrikasi Konstruksi	PT. PGAS Solution	Batang, Central Java	1,000 m2	Mar-2021
27	Painting on Steel Structure for Ducting, Anti Surging & Sea Water Platform for Gresik Copper Smelter	PT. Ote Engineering	PT. Smelting Co.	Gresik, East Java	1 Lot	Mar 2021 to Apr 2021
28	Painting on Steel Structure & Platform for 2nd Floor Casox for Gresik Copper Smelter	PT. Ote Engineering	PT. Smelting Co.	Gresik, East Java	1 Lot	Apr 2021 to May 2021
29	Blasting on Storage Tank for Petrokimia Gresik Plant	PT. Indoxide	PT. Petrokimia Gresik	Gresik, East Java	200 m2	Aug 2021
30	Blasting on Storage Tank for Petrokimia Gresik Plant	PT. Indoxide	PT. Petrokimia Gresik	Gresik, East Java	500 m2	Aug 2021



No.	Project	Client	Owner	Location	Work Volume	Schedule
31	Blasting on Storage Tank for Petrokimia Gresik Plant	PT. Indoxide	PT. Petrokimia Gresik	Gresik, East Java	400 m2	Dec 2021
32	Blasting & Painting on Fuel Tank for Tujuh Bukit Mining	PT. Bumi Suksesindo	PT. Merdeka Copper Gold	Banyuwangi, East Java	600 m2	Jan-2022
33	Painting on Steel Structure of Dust Chain & Slug Conveyor for Gresik Copper Smelter	PT. Ote Engineering	PT. Smelting Co.	Gresik, East Java	2,200 m2	Jan 2022 to Mar 2022
34	Blasting & Painting on Cat Walk Column (Anode Furnace Area) for Gresik Copper Smelter	PT. Hikari Teknologi Indonesia	PT. Smelting Co.	Gresik, East Java	500 m2	Feb 2022
35	Blasting & Painting Internal Storage Tank at Banyuwangi for Tujuh Bukit Mining	PT. Bumi Suksesindo	PT. Merdeka Copper Gold	Banyuwangi, East Java	300 m2	Feb-2022
36	Blasting on Blade Rotor & Nozzle for PLTU Lontar	PT. Wasa Mitra Engineering	PT. Indonesia Power	Tangerang, Banten	500 m2	Feb 2022 to Mar 2022
37	Painting on Main Oil Tank for PLTU Lontar	PT. Wasa Mitra Engineering	PT. Indonesia Power	Tangerang, Banten	400 m2	Mar 2022 to Apr 2022
38	Blasting on 2 unit Rotors for PLTU Rembang	PT. Sulzer Indonesia	PT. PJB	Rembang, Central Java	300 m2	Apr-2022
39	Painting on Shell DT-AT-FAT Tower for Gresik Copper Smelter	PT. Ote Engineering	PT. Smelting Co.	Gresik, East Java	300 m2	Apr 2022 to Jun 2022
40	Painting on Painting Cement Silo at Etex - Gresik for Maspion Industries	PT. Trans Teknik Engineering	PT. Cargill	Gresik, East Java	100 m2	Jun-2022



No.	Project	Client	Owner	Location	Work Volume	Schedule
41	Painting on Painting Kasting & Safety Sign Board for Maspion Industries	PT. Trans Teknik Engineering	PT. Cargill	Gresik, East Java	100 m2	Jul-2022
42	Blasting & FRP Lining on Chimney for KPC Lead Smelter	PT. Kapuas Prima Coal	PT. Kapuas Prima Coal	Kotawaringin Barat, Central Kalimantan	250 m2	Jul-2022
43	Floor Coating on 2nd Floor of Weighing & Sampling Building for Gresik Copper Smelter	PT. Ote Engineering	PT. Smelting Co.	Gresik, East Java	1 Building	Jul-2022
44	Blasting & Painting on Sandblasting & Coating of Outlet Line #1 & #2 for PLTU Paiton 5 & 6	PT. YTL Jawa Timur	PT. JAWA POWER	Paiton, East Java	300 m2	Aug-2022
45	Dry Abrasive Blast Cleaning Turbine Generator at Asahi Mas Cilegon for Asahimas - Cilegon	PT. Wasa Mitra Engineering	PT. Asahimas - Cilegon	Cilegon Banten	1 Lot	Aug-2022
46	Blasting on Aplikasi Sand Blasting & Equipment di Mojokerto for Tjiwi Kimia	PT. Sulzer Indonesia	PT. Tjiwi Kimia	Mojokerto-Jatim	1 Lot	Oct-2022
47	Floor Coating on Acid Transfer Pump Area for Gresik Copper Smelter	PT. Ote Engineering	PT. Smelting Co.	Gresik, East Java	1 Building	Oct-2022
48	Mechanical & Coating on Structure Under Tertiary Liberator for Gresik Copper Smelter	PT. Chiyoda International Indonesia	PT. Smelting Co.	Gresik, East Java	1 Lot	Nov-2022
49	Mechanical & Coating on LOX Equipment Anchor Bolt Reinforcement Plan for Gresik Copper Smelter	PT. Chiyoda International Indonesia	PT. Smelting Co.	Gresik, East Java	1 Lot	Nov-2022
50	Scaffolding on Circulating Water Pipe for PLTU Paiton 5 & 6	PT. YTL Jawa Timur	PT. JAWA POWER	Paiton, East Java	1 Lot	Aug 2022 to Nov 2022



No.	Project	Client	Owner	Location	Work Volume	Schedule
51	Blasting & Painting on 150 KV Bridge Structure for PLTU Paiton 5 & 6	PT. YTL Jawa Timur	PT. JAWA POWER	Paiton, East Java	850 m2	Nov 2022 to Jan 2023
52	Painting Services on Pipeline for N2 Pipeline Teluk Lamongan	PT. Pipa Nitrogen Servive Indonesia	PGN Saka	Gresik, East Java	MD	Oct 2022 to Dec 2022
53	Blasting & Painting on Piping, Equipment, Structure, Bulding , etc. for PLTU Paiton 5 & 6	PT. YTL Jawa Timur	PT. Jawa Power	Paiton, East Java	On Progress	Apr 2022 to Mar 2024
54	Blasting & Painting on Conduit Pipe for Manyar Smelter Project	PT. Kinden Indonesia	PT. Freeport Indonesia	Gresik, East Java	On Progress	Nov 2022 to Presen



**Turnaround (TAR)
No. 6 & 7 for
Tangguh LNG
Plant**

1

Client	PT. JGC Indonesia
Owner	BP Berau Ltd.
Location	Bintuni, West Papua
Work Volume	Apprx. 1,200 (TAR6) & Approx. 1,800 (TAR7)
Item	Dehydration Vessel & Exhaust Duct (Train 1 & 2)
Scope	Blasting, Painting, Remove & Install Insulation
Schedule	May 2015 to Jun 2015 (TAR6) Apr 2016 to May 2016 (TAR7)
Sector	LNG Plant
Category	Maintenance



Blasting and Wrapping on Pipe Weld Joint for PGN Pipeline Waru-Manyar

2

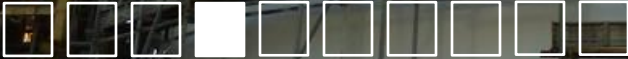
Client	PT. Panca Indah Jayamahe
Owner	PT. PGN
Location	Gresik & Sidoarjo, East Java
Work Volume	3,000 Joint (Phase-1) – 3,300 Joint (Phase-2)
Item	Pipe Welding Joint
Scope	Blasting & Wrapping
Schedule	May 2015 to Apr 2016 (Phase-1) Jul 2019 to Mar 2020 (Phase-2)
Sector	Gas Pipeline
Category	New Construction



Painting Work
on Piping for
Cilacap Blue
Sky Project

3

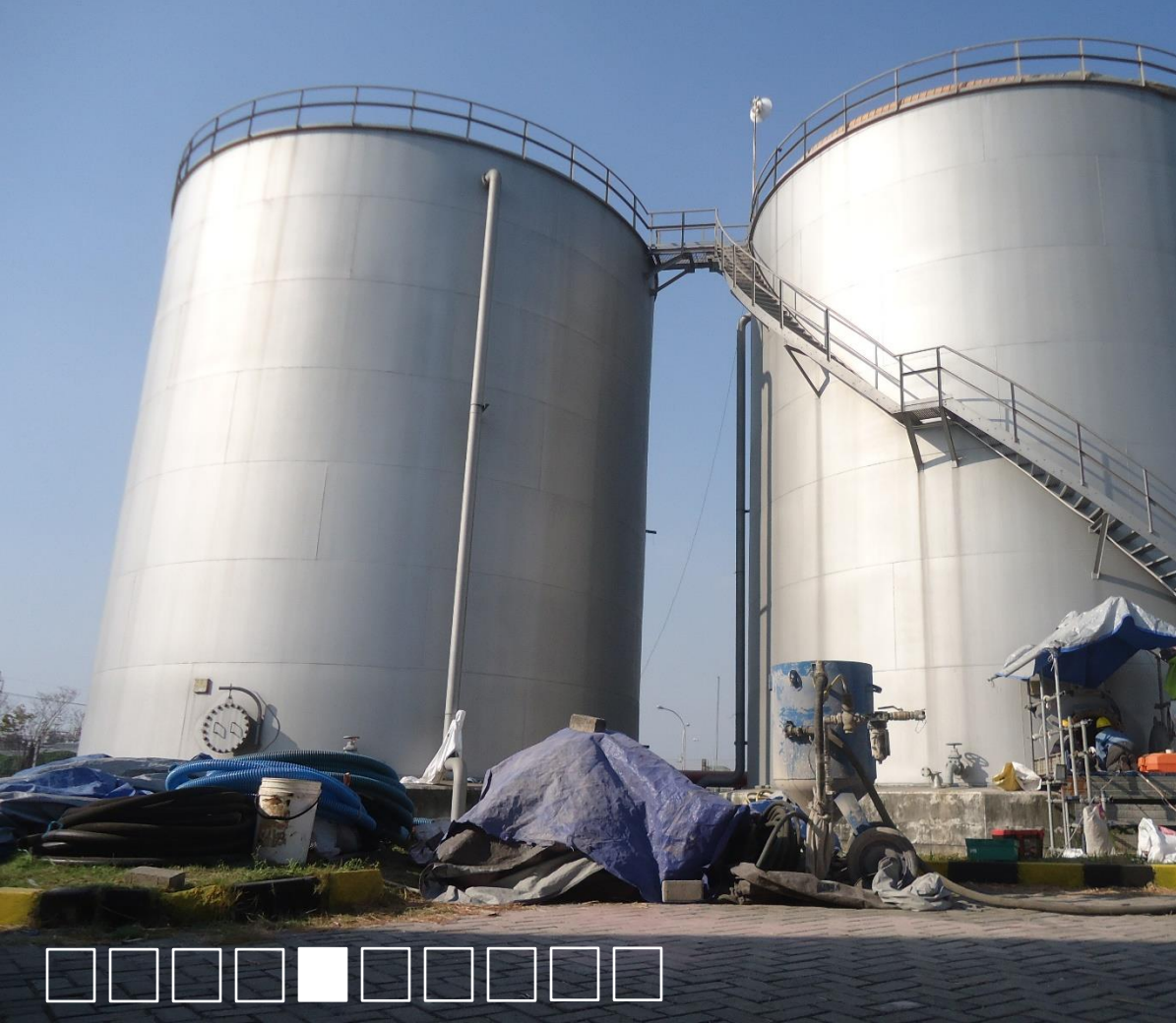
Client	PT. Eptco Dian Persada
Owner	PT. Pertamina
Location	Cilacap, Central Java
Work Volume	60,900 M2
Item	Pipe, Fitting, Valve & Pipe Supports
Scope	Shop Blasting, Shop Painting
Schedule	Mar 2017 To Jul 2018
Sector	Oil Refinery
Category	New Construction



Coating On
Cooling Water
Tank For Cilacap
Blue Sky Project

4

Client	PT. Eptco Dian Persada
Owner	PT. Pertamina
Location	Cilacap, Central Java
Work Volume	2,000 M2
Item	Cooling Water Tank (1 unit)
Scope	Touch-up, External Coating & Internal Coating
Schedule	Apr 2018 to May 2018
Sector	Oil Refinery
Category	New Construction



**Internal Coating
for Storage Tank
at Shell Gresik
Terminal**

5

Client	PT. Seiso Indonesia
Owner	PT. Shell Gresik Terminal
Location	Gresik, East Java
Work Volume	2,800 m2
Item	Motor Gasoline Tank (2 units) & Fire Water Tank (2 units)
Scope	Internal Blasting & Coating
Schedule	Apr 2019 to Nov 2019
Sector	Oil Terminal
Category	Maintenance



Internal Coating for Condensate Tank at Tangguh LNG Plant

6

Client	KSO Elnusa – Raga
Owner	BP Berau Ltd.
Location	Bintuni, West Papua
Work Volume	1,500 M2
Item	Condensate Tank 076-TK-1001 (1 unit)
Scope	Internal Blasting, Internal Coating (Vinyl Ester)
Schedule	Dec 2019 to Mar 2020
Sector	LNG Plant
Category	Maintenance



Internal Coating
for Storage Tank
at Tujuh Bukit
Mining

7

Client	PT. Bumi Suksesindo
Owner	PT. Merdeka Copper Gold
Location	Banyuwangi, East Java
Work Volume	900 m2
Item	Fuel Tanks (2 units)
Scope	Internal Blasting & Coating
Schedule	Jan – Feb 2022
Sector	Mining
Category	Maintenance



FRP Lining for Chimney at KPC Lead Smelter Plant

8

Client	PT. Kapuas Prima Coal
Owner	PT. Kapuas Prima Coal
Location	Kotawaringin Barat. Central Kalimantan
Work Volume	250 m2
Item	Chimney
Scope	Blasting, FRP Lining
Schedule	Jul 2022
Sector	Smelting Plant
Category	New Construction



Various Contract for Painting Maintenance at Gresik Copper Smelter Plant

9

Client	PT. Smelting Co., PT. OTE Engineering, PT. Hikari Teknik Indonesia, PT. Ume Persada
Owner	PT. Smelting Co.
Location	Gresik, East Java
Work Volume	Various Quantity (approx. 20,000 m2 / year)
Item	Piping, Equipment, Steel Structure, Water Intake, etc.
Scope	Blasting, Painting, Touch-up, Floor Coating, Internal Coating
Schedule	Nov 2014 to Present
Sector	Smelting Plant
Category	Maintenance



Blanket Maintenance Contract for PLTU Paiton Unit 5 & 6

10

Client	PT. YTL Jawa Timur
Owner	PT. Jawa Power
Location	Paiton, East Java
Work Volume	On Progress (Approx. 40,000 m2)
Item	Piping, Equipment, Steel Structure, Building, Bridge
Scope	Blasting, Painting, Touch-up, Building Painting, Internal Coating
Schedule	Apr 2022 to Mar 2024
Sector	Power Plant
Category	Maintenance

For any cooperation and inquiry propose,

please do not hesitate to communicate with our marketing team as below contact information. Our team will be glad to support you and provide technical and commercial proposal / quotation in accordance with your requirements.

Jakarta Office



Jl. Mampang Prapatan Raya No. 27-J
Jakarta 12760 - Indonesia



+62 21 7919 7451



contact@dpindonesia.com



PIC :

Dedi Eko K | Marketing & Project Estimation | +62 813-8587-0045 | dedi.eko@dpindonesia.com
Ari Supramono | Construction Department | +62 813-8248-5342 | ari.supramono@dpindonesia.com

Gresik Office



Sukomulyo Building Kav. 18-19
Jl. Raya Sukomulyo, Manyar, Gresik, Jawa Timur - Indonea



+62 31 395 7151



dps-gresik@indo.net.id



PIC :

Didik Basuki | Branch Manager | +62 811-337-284 | didik.basuki@dpindonesia.com



Or Find Us On
www.dpindonesia.com

PT. DHARMA PRADANA INDONESIA
Protective Coating Specialist Company



Company Profile – Edition 2023